

Features

- Ruggedized aluminum enclosures
- Hot-swappable power supplies & insert cards
- Redundant power supply option
- Reversible mounting ears

Power Supplies

PS-200F



Universal 200 watt fan cooled power supply for the OT-CC-16F chassis. Self detecting 100-240 VAC 50/60Hz operation. Choice of North American (-NA) or European (-EU) power cord.

PS-100/PS-200



Universal 100 or 200 watt fan cooled power supply for the OT-CC-16 chassis. Self detecting 100-240 VAC 50/60Hz operation. Choice of North American (-NA) or European (-EU) power cord.

PS-9060



Universal 60 watt fan cooled power supply for the OT-CC-6 chassis. Self detecting 100-240 VAC 50/60Hz operation. Choice of North American (-NA) or European (-EU) power cord.

PS-9012



Universal 100-240 VAC 50/60Hz external power supply for the OT-DTCR-1 & -2 desktop enclosures. Includes regional power socket adapters.

Enclosures for Optiva Insert Cards

The new Optiva OT-CC-16F, with internal cooling fan, and standard OT-CC-16 enclosures are ruggedized 3RU aluminum rackmount chassis that accept any Optiva insert card. These high capacity 16-card plug-in chassis provide a "state of the art" platform for density and space utilization.

Both 3RU models feature hot-swappable, fan cooled power supplies and insert cards. Options include redundant power supplies, LED indicators for power and status, as well as reversible rack mounting ears. With the addition of the SNMP Management card (Model: OPV-CTRL-IC), all chassis and insert card health parameters may be monitored remotely.

The OT-CC-6 series chassis is a low profile 1RU rackmount enclosure. It holds up to 6 Optiva insert cards with space for an optional SNMP Management card (Model: OPV-CTRL-IC). It features redundant, hot-swappable, fan cooled power supplies and rack reversible mountable ears. LED indicators are provided for power, fault, optical lock and network management status.

Our smallest and most compact enclosures, the OT-DTCR-2 and OT-DTCR-1 are perfect for installations that are space constrained or simply do not require rackable equipment. Popular uses are for remote video camera feeds, airport terminal signage, or simple point-to-point fiber links. These enclosures are passively cooled and are powered by the external PS-9012 power supply.

OT-CC-16F



OT-CC-16



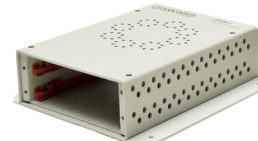
OT-CC-6



OT-DTCR-1



OT-DTCR-2



OPV-CTRL-IC

DATASHEET

FIBER OPTICS

OT-CC-16F Models

Model	Description
OT-CC-16F-001	Optiva 16-Slot 3RU Fan Cooled Enclosure (Power Supplies not Included)
OT-CC-16F-002	Optiva 16-Slot 3RU Fan Cooled Enclosure with Reversed Mounting (Power Supplies not Included)
OT-CC-16F-003	Optiva 16-Slot 3RU Fan Cooled Enclosure with 4" Recessed Mounting (Power Supplies not Included)
PS-200F-NA	200W 120/240 VAC Power Supply for the OT-CC-16F Enclosure, N.A. Power Cord
PS-200F-EU	200W 120/240 VAC Power Supply for the OT-CC-16F Enclosure, European Power Cord
PS-200F-UK	200W 120/240 VAC Power Supply for the OT-CC-16F Enclosure, U.K. Power Cord

OT-CC-16 Models

Model	Description
OT-CC-16-XX	16-Slot 3RU Rackmount Enclosure w/o Power Supplies
OT-CC-16-01	16-Slot 3RU Rackmount Enclosure. Reversed Mounting w/o Power Supplies
OT-CC-16-XX-100-NA	Optiva 16-Slot 3RU Enclosure with (1) 100W Power Supply and N.A. Power Cord
OT-CC-16-XX-100-EU	Optiva 16-Slot 3RU Enclosure with (1) 100W Power Supply and European Power Cord
OT-CC-16-XX-100-RPS-NA	Optiva 16-Slot 3RU Enclosure with (2) 100W Power Supplies and N.A. Power Cord
OT-CC-16-XX-100-RPS-EU	Optiva 16-Slot 3RU Enclosure with (2) 100W Power Supplies and European Power Cord
PS-100-NA	100W 120/240 VAC Power Supply for the OT-CC-16 Enclosure, N.A. Power Cord
PS-100-EU	200W 120/240 VAC Power Supply for the OT-CC-16 Enclosure, European Power Cord
PS-200-NA	100W 120/240 VAC Power Supply for the OT-CC-16 Enclosure, N.A. Power Cord
PS-200-EU	200W 120/240 VAC Power Supply for the OT-CC-16 Enclosure, European Power Cord
FA-2000-NA	1RU Cooling Fan Tray for OT-CC-16, 120V Internal N.A. Power Supply
FA-2000-EU	1RU Cooling Fan Tray for OT-CC-16, 240V Internal European Power Supply

- Replace XX with 01 for reversed mounting option

OT-CC-6 Models

Model	Description
OT-CC-6-1U-NA	4-Slot 1RU Rackmount Enclosure w/Integrated Power Supply
OT-CC-6-1U-EU	2-Slot Desktop / Wall-mount Enclosure (PS-9012 Power Supply Included)
PS-9060-NA	Universal Power Supply for the OT-CC-6 Chassis, North American Power Cord
PS-9060-EU	Universal Power Supply for the OT-CC-6 Chassis, European Power Cord

OT-DTCR-1 & -2 Models

Model	Description
OT-DTCR-1	1-Slot Desk Top / Wall Mount Enclosure with PS-9012 Power Supply
OT-DTCR-2	2-Slot Desk Top / Wall Mount Enclosure with PS-9012 Power Supply
PS-9012	Universal Wall Mount Power Supply with Regional Power Adapters

General

Specifications	Values
Operating Temperature	-20°C to +55°C
Storage Temperature	-40°C to +85°C
Humidity	0 to 95% (Non-Condensing)
Warranty	3 Year

OT-CC-16F & OT-CC-16

Specifications	Values
Dimensions	8.64" L x 19" W x 5.22" (3RU) H
Weight (Chassis only)	8 lbs.
Operating Voltage	100-240 VAC 50/60Hz

OT-CC-6

Specifications	Values
Dimensions	19" L x 7.3" W x 1.75" (1RU) H
Weight (4/6)	8 / 10 lbs.
Operating Voltage	100-240 VAC 50/60Hz

OT-DTCR-1 & OT-DTCR-2

Specifications	Values
DTCR-1 Dimensions	7.47" L x 7.0" W x 1.08" H
Weight	1.25 Lbs.
Operating Voltage	9-12 VDC, 1A
DTCR-2 Dimensions	7.47" L x 7.0" W x 1.88" H
Weight	1.6 Lbs.
Operating Voltage	9-12 VDC, 1A

Monitoring & Control

Specifications	Values
Local	LED status and alert indicators
Remote	OptivaView SNMP Management Software

- Requires OptivaView SNMP Controller Card (Model: OPV-CTRL)

Compliance

